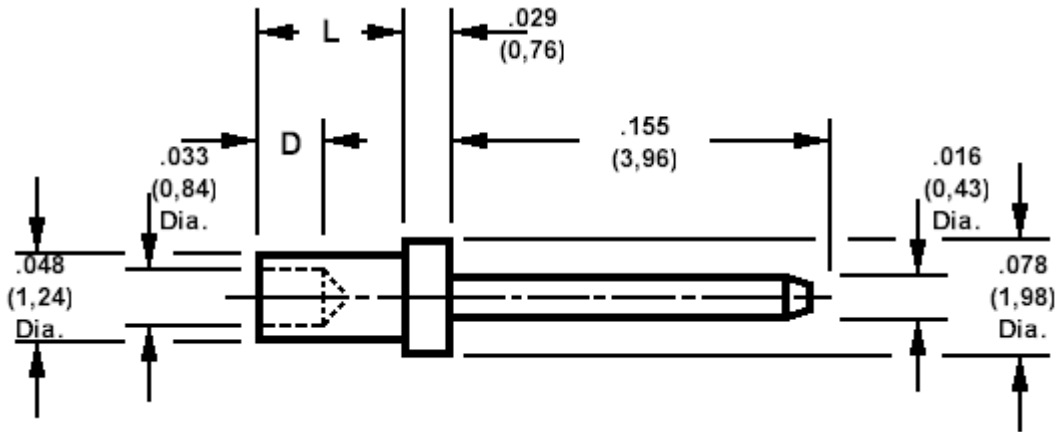


460-2599 Swage mount, .016 (0,43) diameter pin

Recommended mounting hole $.052 (1,32) \pm .002 (0,05)$



How to order code

460-2599-XX-YY-00

Basic Part No XX = L dimension, YY = Plating Finish

DIMENSIONS (XX)				
Basic Part Number	(XX)	L	For Board Thickness	D
460-2599	-01	.051 (1,30)	.031 (0,79)	.035 (0,89)
	-02	.081 (2,08)	.061 (1,57)	.061 (1,57)
	-03	.112 (2,87)	.094 (2,39)	.061 (1,57)
	-04	.144 (3,68)	.125 (3,18)	.061 (1,57)

MATERIALS			
Component	Material	Finish (-03)	Finish (-04)
Pin	Brass	Gold over Nickel	Electro-tin

SWAGE TOOLING	
Recommended Swaging Tools:-	
Anvil	435-6496-01-00-00
Punch	435-6657-01-00-00